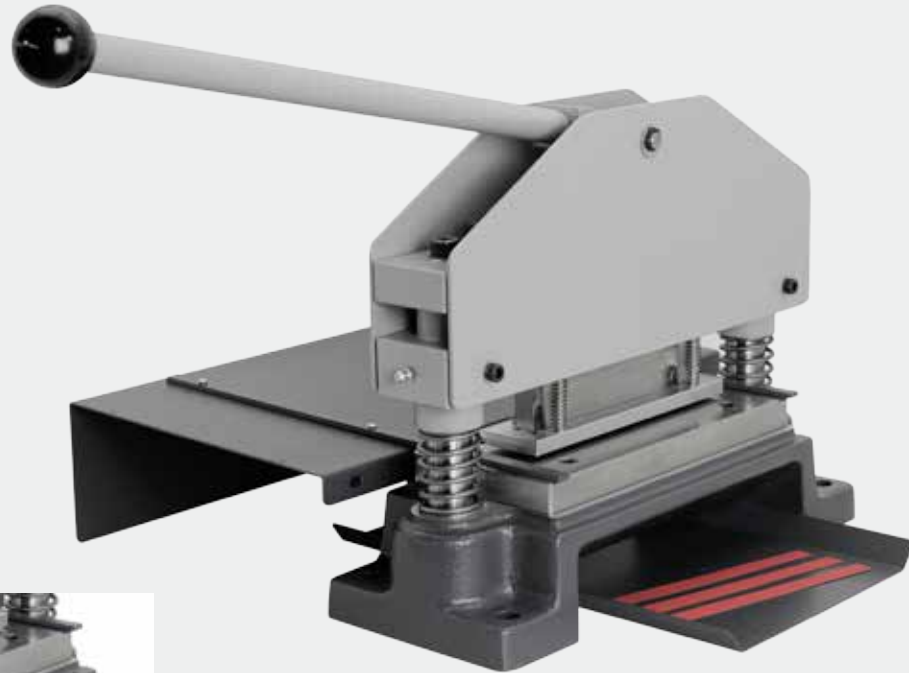


PreparationProducts

STRIP PUNCH



Metal sheet for easy removing of the samples

PRODUCT DESCRIPTION

The robust strip punch functions according to the “punch & die” principle and consists of an upper and lower blade, which punch the sample. A long hand lever with force transfer, makes punching easier. On the left of the device is a feeding table with integrated guide, which guarantees ease of material placement. A clamping mechanism holds the sample firmly during punching. Samples are removed from a metal sheet located below the punch.

The punch can be used for materials from 50 up to 800 gsm.

TEST DESCRIPTION

The material to be punched is placed on the feeder table, and pushed along the guide rails between the upper and lower blades. Pushing the hand lever down places a safety guard on the material, which also prevents the material from slipping. The punching takes place when the lever is pushed down. After the process the sample strips fall through the lower blade onto a metal sheet, which is pulled out to remove the samples.

MODELS

- Punching size 6.0 x 0.5 in
For CCT-, RCT- and CMT-tests
- Punching size 7.0 x 1.0 in
For internal bond tests
- Punching size 300 x 15 mm
For tensile tests acc. to ISO and SCT-tests
- Punching size 300 x 25 mm
For tensile tests acc. to TAPPI
- Punching size 300 x 25.4 mm
For tensile tests acc. to TAPPI

FRANK-PTI
QUALITY TESTING INSTRUMENTS

SUBSIDIARY OF  Carl Hansson

Germany

FRANK-PTI GMBH
Auf der Aue 1
69488 Birkenau
Tel.: +49 6201 84-0
office@frank-pti.com

Austria

PAPER TESTING INSTRUMENTS GMBH
Hauptstrasse 41a (im BDZ)
4663 Laakirchen
Tel.: +43 7613 90607-0
office@at.frank-pti.com

www.frank-pti.com